

# PHILIPS

## Ultrasound

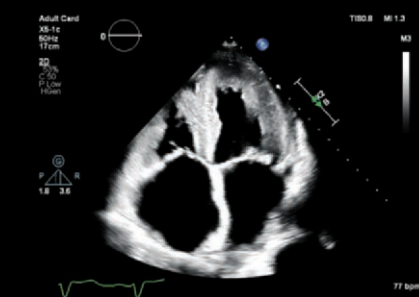
### EPIQ Elite

# See what EPIQ CVx can do for you now

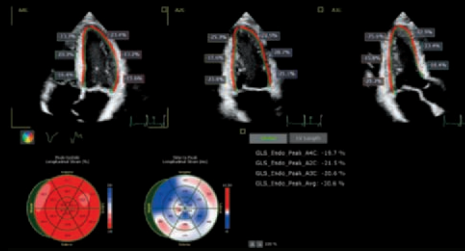
## Cardiovascular imaging

Today's EPIQ CVx is not yesterday's ultrasound system. The uniquely modular platform of EPIQ CVx means we keep advancing capabilities so you have access to the powerful imaging and workflow efficiency that can help you meet the challenges of staff shortages, increasing patient loads and the demand for more complex cardiovascular imaging.

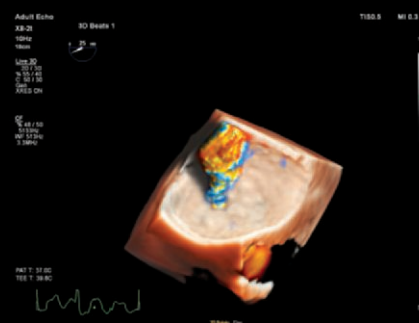
## Exceptional capabilities



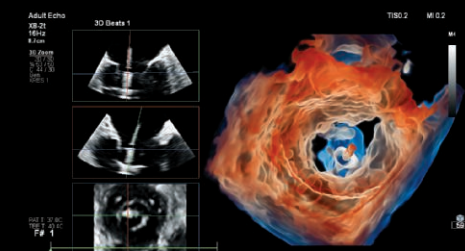
Enhanced imaging even in small rib spaces with the X5-1c transducer



Streamline evaluation of cardiac function with 2D Auto Measure, AutoStrain LV, Dynamic HeartModel and 3D Auto RV



Enhanced visualization of flow and its location within the anatomy with TrueVue color



Rapidly visualize and acquire LAA measurements with TrueVue Glass and 3D Auto LAA

## Innovative transducers

### X5-1c cardiac transducer

for Transthoracic echo (TTE)

### X8-2t Live 3D transesophageal transducer

for one-beat acquisition

### S9-2 pediatric 2D transducer

designed for pediatric patients



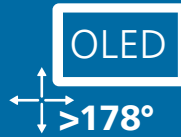
# EPIQ CVx offers you so much more

Confident decision-making begins with exceptional cardiovascular imaging with simplified workflow.



## A more powerful beamforming technology

Provides next-generation imaging performance.\* nSIGHT Plus architecture maximizes flexibility in delivering new image formation technologies.



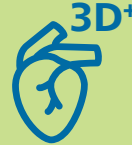
## Flat panel OLED display

Features a 54.9 cm (21.6 in) wide format OLED display to provide a high contrast ratio, bright colors and a greater than 178° viewing angle up, down and left, right, for optimum viewing of echo images.



## 2D Image Boost

Offers an advanced image processing technique that suppresses unwanted clutter signals and boosts desired signals from the myocardium and other cardiac structures.



## Cardiac TrueVue

Displays 3D, 3D color or glass view modes, providing photorealistic rendering with virtual light placed anywhere in the 3D volume.



## AI and advanced automation for robust, proven reproducible cardiac quantification

AI and advanced automation provide fast and easy measurements of a full range of cardiac function, including Auto Measure (fully automated 2D Doppler and length measurements) AutoStrain (fast, reproducible 2D strain quantification for the LV, LA and RV), Dynamic HeartModel and 3D Auto RV (full 3D quantification for LV, LA and RV) and 3D Auto MV (dynamic mitral valve analysis).

## Ultrasound Collaboration Live with Multi-party\*\*

Extend your team without expanding it  
Now with simultaneous multi-party communication

Up to six users can quickly and securely talk, text, screen share and video stream directly from the ultrasound system for access to multiple clinical resources at a distance.†



\* Compared to our previous generations without nSIGHT Plus.

‡ Philips EPIQ Ultrasound System release 10.0.

† Contract required. Collaboration Live is intended for remote diagnostic use on release 9.0 or higher.

Find out more at [www.philips.com/GI](http://www.philips.com/GI)

