

V10 TABLET VETERINARY DIAGNOSTIC ULTRASOUND SYSTEM



V10 TABLET VETERINARY DIAGNOSTIC ULTRASOUND SYSTEM

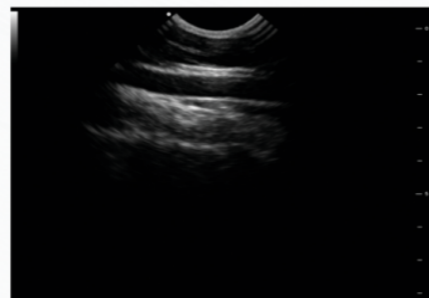


V10's sleek, stylish curves give emphasis to modern industrial design philosophy. The device has a full touch screen and can be charged quickly. V10 veterinary ultrasound system has a large battery capacity, Supporting more than 6 hours of working time, and demonstrates excellent versatility in different fields.

*Charge 2 Hours
Work 6 Hours*

SYSTEM CONFIGURATION

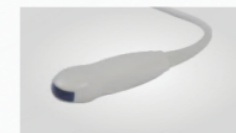
Display	8" high resolution LCD Monitor, Full Touch Sreen
Start-up time	≤20 seconds
Dimension	210mm(L) x 142mm(W) x 18mm(H)
Weight	≤700g
Connector	1 standard transducer connector
Imaging Modes	B, 2B, B+M, M Mode
Port	Blue tooth, Wi-Fi, USB3.0, HDMI
Battery	Internal Li Ion Battery pack, ≥6 hrs
Measurements	Distance, Radius, Angle, Area, Volume, HD, BD, GSD, CRL
Optional Accessories	Leather protective shell for Tablet
	Type C to USB converter
	Car chager
	Carrying Bag



TRANSDUCERS



Linear Rectal



Micro-convex



Linear



Convex



EMP

Shenzhen Emperor Electronic Technology Co.,Ltd.

Add:2&3/F, Building 15, No.1008 Songbai Road,
Nanshan District, Shenzhen, 518108, China

Tel:+86-755-36899033 Fax: 86-755-26419886

Email: emp@china-emperor. com

www.china-emperor.com

AUTHORIZED DISTRIBUTOR

