

PHILIPS

Ultrasound

Compact 5000 series

Performance and portability

With a Philips Compact Ultrasound System 5000 series, you will never have to trade performance for portability. It allows care from virtually anywhere, delivering premium cart-level image quality in a compact system.



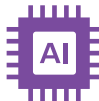
Uncompromised workflow



SmartExam workflow protocols
for exam efficiencies



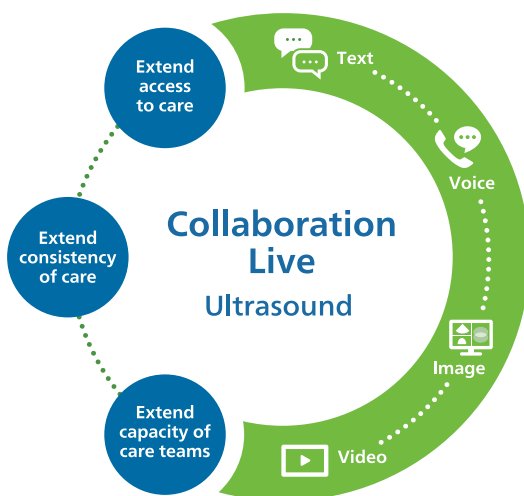
iSCAN intelligent scanning
for one-button 2D, color and PW optimization



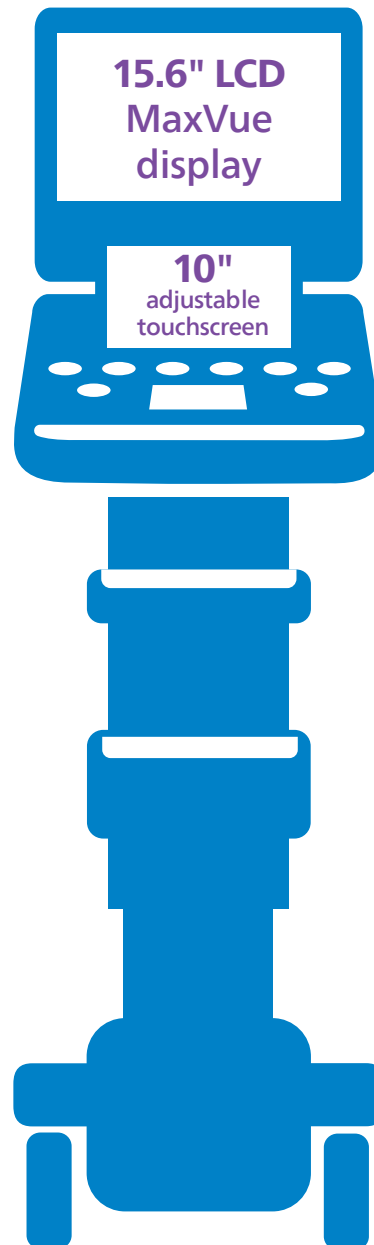
AI-powered¹ automation tools
One-button push for LV GLS measurements



300% longer battery life
with optional battery*



Real-time collaboration with colleagues through **Philips Collaboration Live**** so clinicians can securely talk, text, screen-share and video-stream directly from the system



Save time

when compared to the CX50 ultrasound system



20% faster boot-up and

33% fewer hard keys



42% reduction in button pushes and

32% reduction in exam time with **Philips aBiometry Assist[†]**



30% shorter exam time for Focused Assessment with Sonography in Trauma (FAST)

* Compared to the CX50 ultrasound system.

** Contract required. Collaboration Live is designed to enable clinical collaboration and consultation on the Philips Compact Ultrasound System 5000 series, but is not intended for diagnostic use on that series. Collaboration Live is intended for clinical collaboration, consultation and remote diagnostic use on Philips EPIQ and Affiniti ultrasound systems, release 9.0 or higher.

1. According to the definition of AI from the EU High-Level Expert Group.

† Compared to using the semi-automated aBiometry Assist versus manual operation.



Uncompromised image quality



34% increase in near-field lateral resolution and **10% increase** in Doppler sensitivity.*



100% of users surveyed felt that the image quality of the Philips Compact Ultrasound System 5000 series was better than previous systems.†



MicroFlow Imaging (MFI) for assessing blood flow

85% of the users surveyed felt that MFI enhanced their visualization of organ perfusion.**



22% increase in diagnostic confidence for 2D image resolution.‡



Uncompromised capabilities

Advanced features not commonly found on compact systems

- Contrast imaging
- Needle visualization
- 3D/4D imaging
- FlexVue
- AutoSTRAIN
- Strain elastography
- TrueVue
- GlassVue
- aReveal anatomical intelligence



Uncompromised growth



Advanced performance with shared software and hardware from Philips EPIQ and Affiniti platforms



Up to 24 transducers available which include PureWave technology for improved penetration and color sensitivity available for use across platforms²



Protection for what you value with defense-in-depth security, remote, proactive monitoring and award-winning customer service



Unlock your care transformation along the entire lifecycle with flexible financing solutions

Find out more at [Philips.com/healthcare/solutions/ultrasound](https://www.philips.com/healthcare/solutions/ultrasound)

* When using S5-1 transducer and Adult Echo preset.

** Based on 19 exams from 7 users at 3 external evaluation sites.

† Based on 22 portable labor and delivery scans from 7 users at 3 external evaluation sites.

‡ Based on internal bench test with an ultrasound phantom, using the C5-1 transducer.

2. Chen J, Panda R, Savord B. Realizing dramatic improvements in the efficiency, sensitivity and bandwidth of ultrasound transducers: Philips PureWave crystal technology. Koninklijke Philips N.V. Aug 2006.



© 2023 Koninklijke Philips N.V. All rights are reserved. Philips reserves the right to make changes in specifications and/or to discontinue any product at any time without notice or obligation and will not be liable for any consequences resulting from the use of this publication. Trademarks are the property of Koninklijke Philips N.V. or their respective owners.



www.philips.com
Printed in the Netherlands.

4522 991 82111 * APR 2023