

PHILIPS

Ultrasound

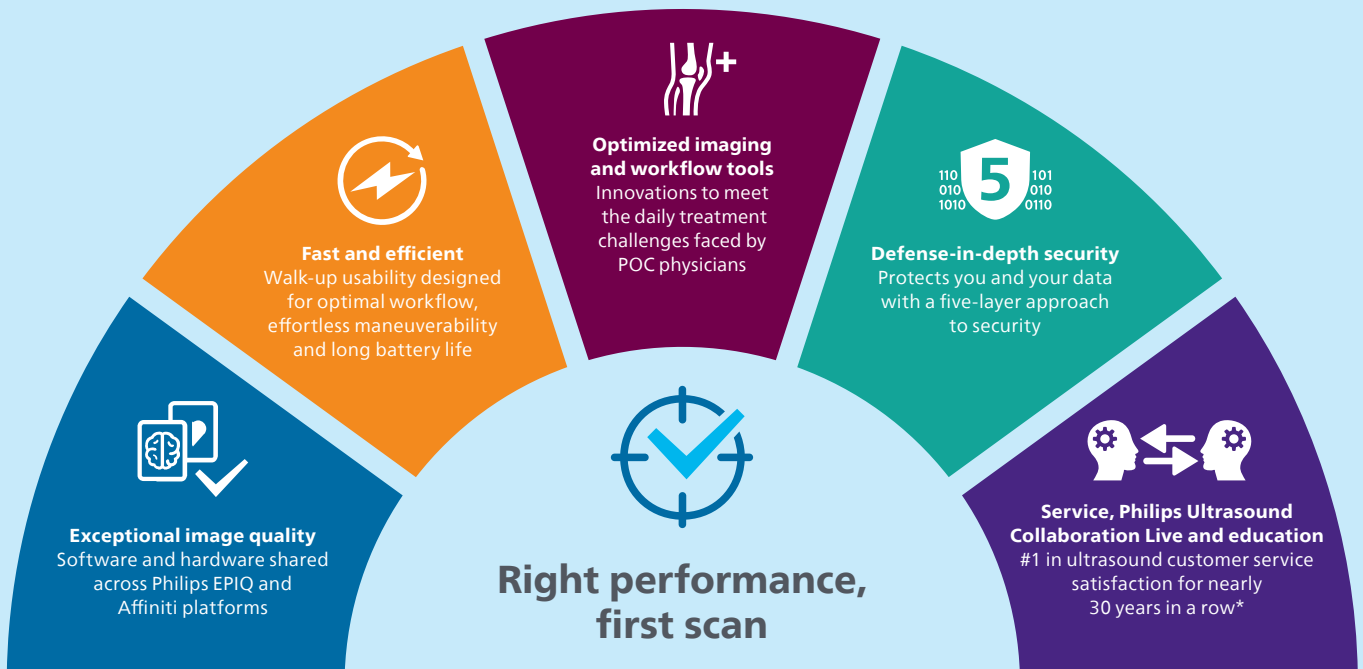
Point of care

Advanced performance and portability for procedures

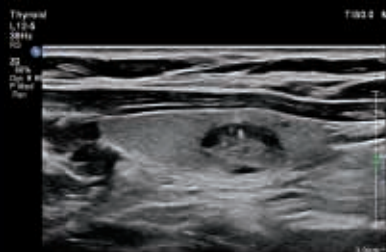
Philips Compact Ultrasound 5000 series

Premium compact ultrasound can support the procedural guidance and assessment needs of a busy musculoskeletal, vascular, breast and endocrine or interventional ultrasound practice. Compact 5000 series offers exceptional image quality and efficient workflow. A fully customizable platform of software and hardware provides you the flexibility to maximize your investment over time.

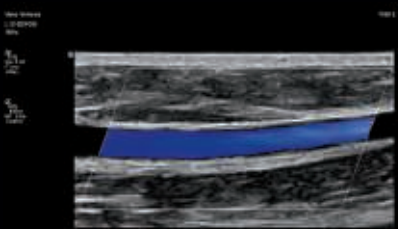
It's not just compact. It's compact without compromise.



*Philips is rated number one in overall service performance for ultrasound for 28 consecutive years in the annual IMV ServiceTrak survey in the USA.



Thyroid



Vein with color



Interscalene nerve

Premium is now compact



Mobile efficiency
that's designed for performance, with shared workflow, common interface and transducer compatibility across the Philips portfolio



Advanced performance
with shared hardware and software architecture across the Philips EPIQ Elite and Affiniti high-level cart platforms



Ultrasound Collaboration Live*
allows clinicians to securely talk, text, screen share and video stream directly from the system



2.5 hrs Long battery life
for up to 2.5 hours of scanning with extended batteries



Easy connectivity
using WiFi to share images and reports



Sealed control panel
for cleanability and disinfection



Defense-in-depth security
to protect your valuable data



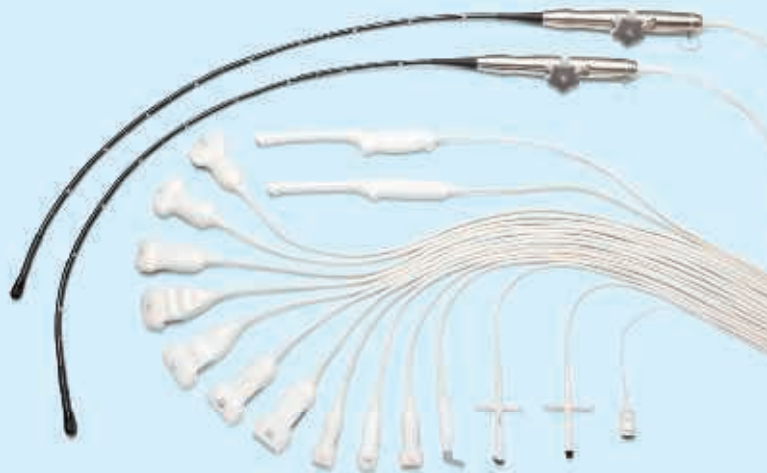
AutoSCAN intelligent scanning
for one-button 2D, color and PW optimization



Award-winning compact design
for easy mobility



Compatible with 20 transducers across the Philips portfolio to make the most of your investment



* Contract required. Ultrasound Collaboration Live is designed to enable clinical collaboration and consultation on the Philips Compact Ultrasound 5000 series but is not intended for diagnostic use on that series. Collaboration Live is intended for clinical collaboration, consultation and remote diagnostic use on Philips EPIQ and Affiniti ultrasound systems, release 9.0 or higher.
1. According to the definition of AI from the EU High-Level Expert Group.

© 2023 Koninklijke Philips N.V. All rights are reserved. Philips reserves the right to make changes in specifications and/or to discontinue any product at any time without notice or obligation and will not be liable for any consequences resulting from the use of this publication. Trademarks are the property of Koninklijke Philips N.V. or their respective owners.



www.philips.com
Printed in the Netherlands.

4522 991 81891 * APR 2023